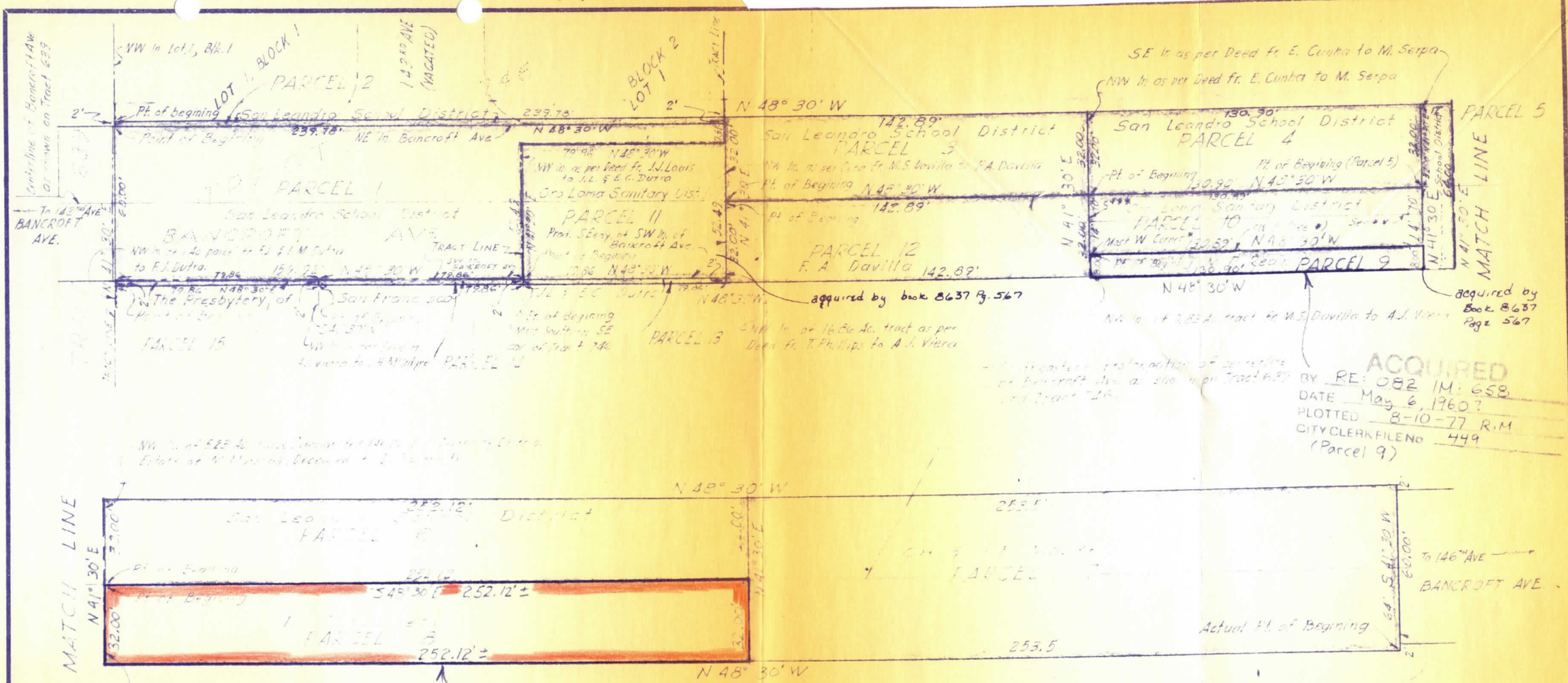


445



**ACQUIRED**  
 BY RE: 082 IM: 658  
 DATE May 6, 1960  
 PLOTTED 8-10-77 R.M.  
 CITY CLERK FILE NO 449  
 (Parcel 9)

**ACQUIRED**  
 BY RE: 082 IM: 660  
 DATE May 6, 1960  
 PLOTTED 8-10-77 R.M.  
 CITY CLERK FILE NO 445

Parcels 1, 3, 4, 5, 6  
 Acquired by  
 Book 8898 Page 159

- \* Most Western Cor. as per Deed fr M. Serpa to J.L. San Dist.
- \*\* A strip of land 14' on each side of E. (E shown)
- \*\*\* NW 1/4 of land contrib. to M. Serpa

MICROFILMED

NO.	REVISED	BY	APVD
1	Reduced R.O.W. to 68'	J.A.	J.G.S.
COMPILED	J.S.	DRAWN	Alexander
CHECKED	R.P.S.	APPROVED	J.P. G.L. Mante
DATE	SCALE		
Aug. 9, 1957	1" = 40'		

DEPARTMENT OF PUBLIC WORKS  
 CITY OF SAN LEANDRO  
 CALIFORNIA  
 ENGINEERING DIVISION  
 RIGHT OF WAY FOR CONSTRUCTION OF  
 BANCROFT AVENUE  
 BETWEEN 142<sup>ND</sup> & 146<sup>TH</sup> AVES.

SHEET 1 OF 1

APPROVED BY  
*D. Henry Hamilton*  
 H. HAMILIN  
 CITY ENGINEER  
 REG. C. E. NO. 7034

DATE

DWG. CASE  
 104 4316035A